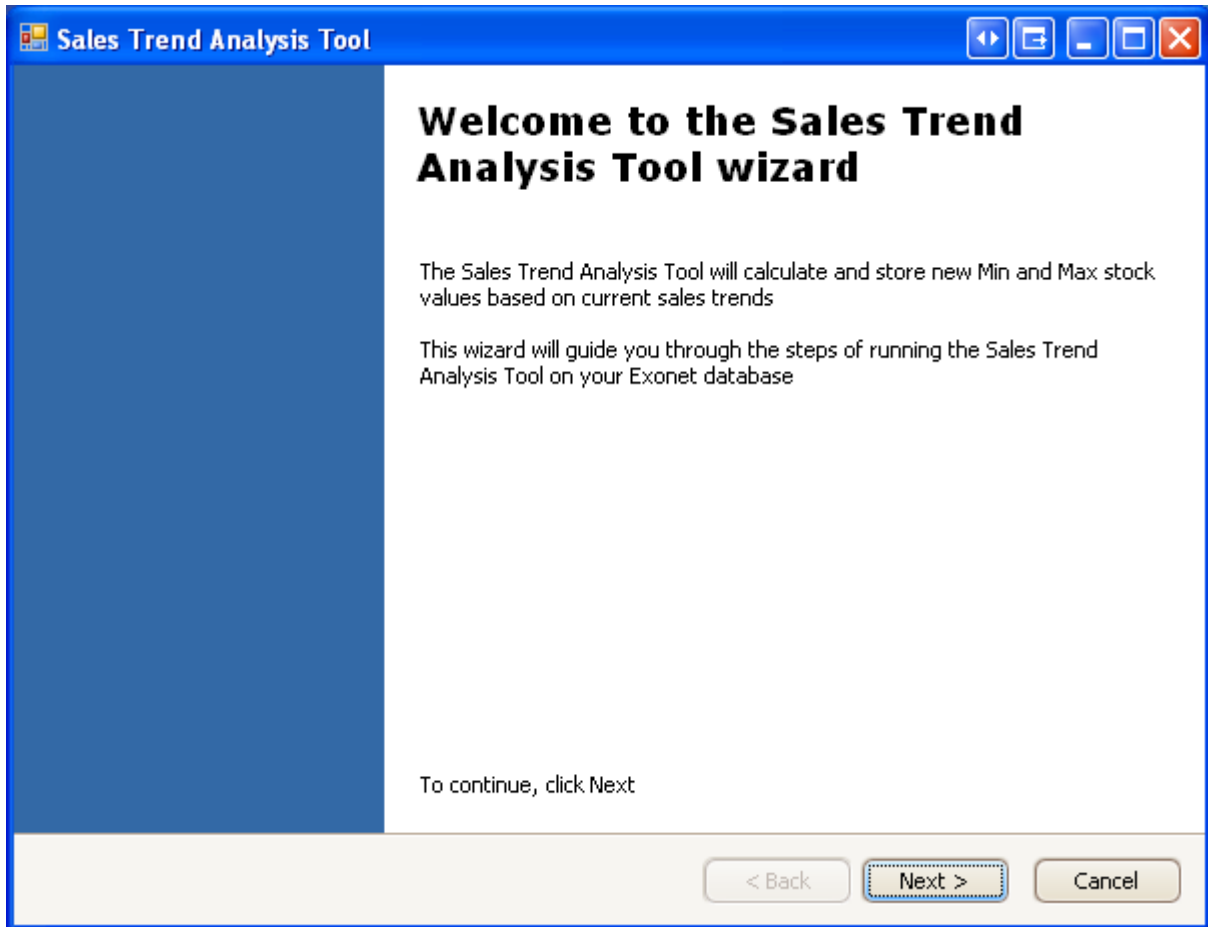


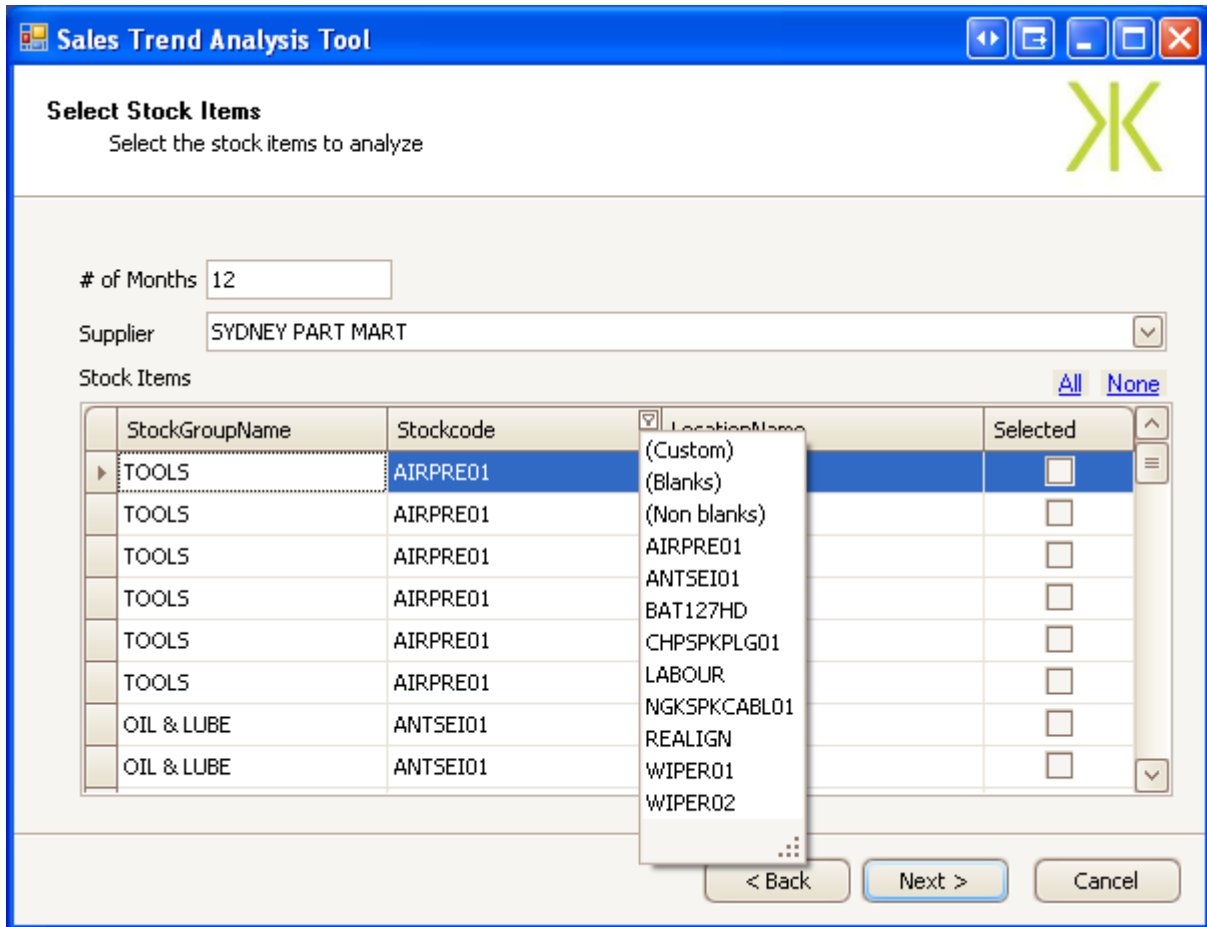
Sales Trend Analysis Tool User Manual





Welcome Screen

Click next to continue

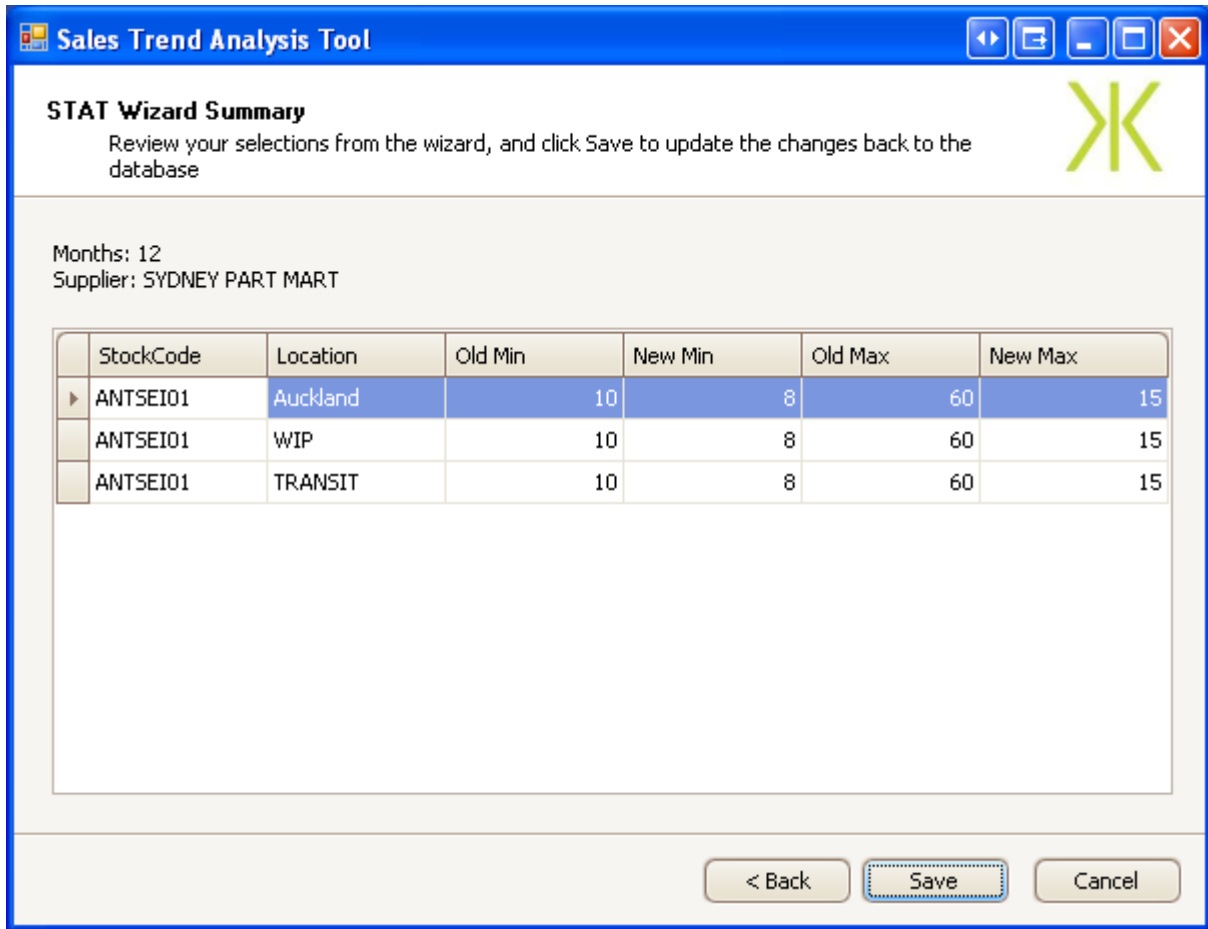


Stock Items Selection screen

1. Select Number of months over which to calculate the average monthly sales. (cannot be below 1, and must be a whole number)
2. Select the supplier whose stock items you'd like to modify
3. Select the Stock items to update by checking the box in the Selected column (at least 1 stock item will need be selected)
 - a. You can filter on any column by clicking the top right of the column and selecting one of the values from the drop down to filter by only that value
4. Select All / None will select or deselect every stock item currently displayed on the form

Note: Only active Suppliers, stock items, stock groups and locations will be displayed and modified by this application

Click next to continue, or click Back to go return to the welcome screen

STAT Wizard Summary
Review your selections from the wizard, and click Save to update the changes back to the database

Months: 12
Supplier: SYDNEY PART MART

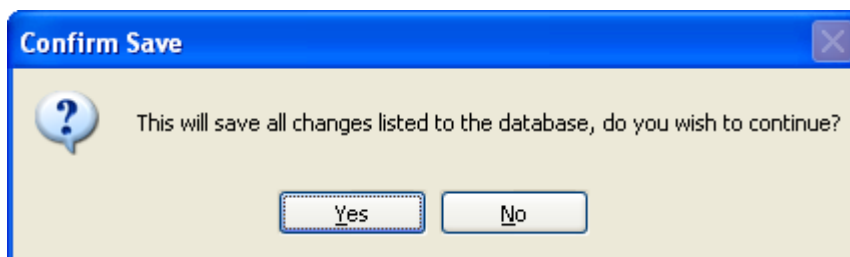
StockCode	Location	Old Min	New Min	Old Max	New Max
ANTSEI01	Auckland	10	8	60	15
ANTSEI01	WIP	10	8	60	15
ANTSEI01	TRANSIT	10	8	60	15

< Back Save Cancel

Wizard summary screen

Displays the stock items you've selected, and the recommended New Min stock and Max stock values compared to their current (old) values.

Clicking Save will display the dialog below, to save the data shown in the form click Yes, otherwise click no to return to the form without making any changes to the database.

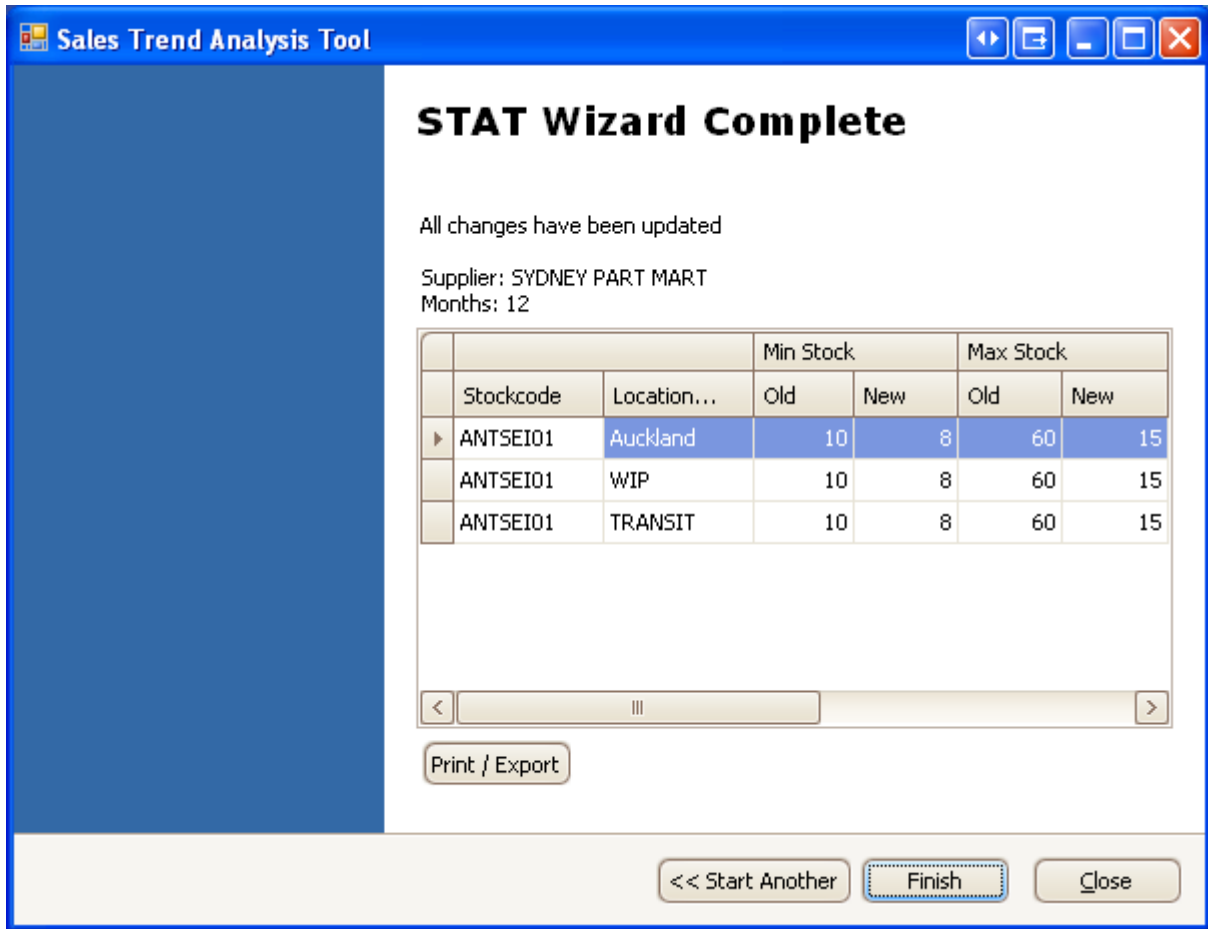


Confirm Save

? This will save all changes listed to the database, do you wish to continue?

Yes No

Click Save to save these changes to the database and continue or click back to return to the Stock Items selection screen (no changes will be saved)



Wizard Complete screen

Displays the updates that have just been saved to your Exonet database, and the values used to calculate the new stock levels. Only CHANGES are shown, if no change was required it will be omitted.

Click Print / Export to display the print preview and exporting dialog (see next page)

Click Start another to return to a new Stock Items selection page

Click Finish or Close to close the Sales Trend Analysis wizard

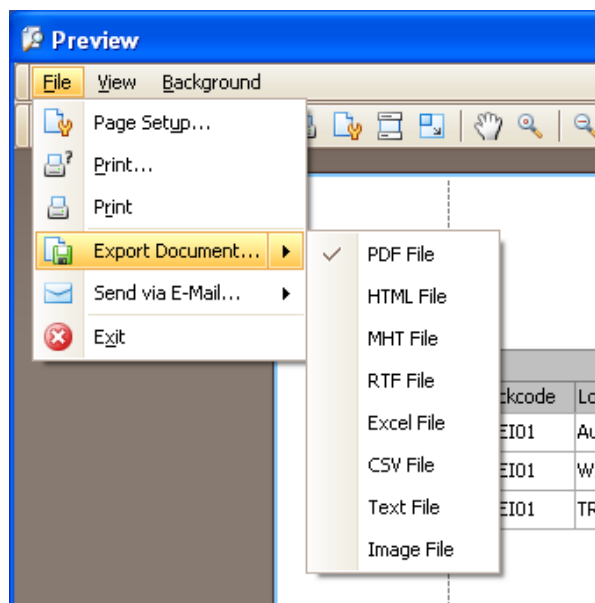
The screenshot shows a 'Preview' window with a table containing the following data:

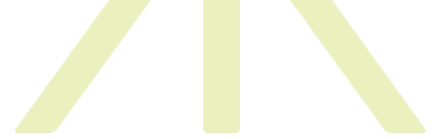
Stockcode	LocationName	Min Stock		Max Stock		SupplierName	MonthsColumn	Timestamp	Username
		Old	New	Old	New				
ANTSEI01	Auckland	10	8	60	15	SYDNEY PAR	Months	28/10/2008	KKL\keith
ANTSEI01	WIP	10	8	60	15	SYDNEY PAR	Months	28/10/2008	KKL\keith
ANTSEI01	TRANSIT	10	8	60	15	SYDNEY PAR	Months	28/10/2008	KKL\keith

Print preview and Exporting dialog

Display a print preview of the updates that have just been saved to your Exonet database.

Opening the file menu shows options for printing, emailing and exporting the data.





Algorithm

The calculation works as follows:

- For each product for a supplier
- Calculate the average sales per month for that product over the last x months
- Find the configuration on the supplier for how many months of stock you want to hold for that supplier and add the lead time in months
- Set the minimum stock required to that number of months multiplied by the average sales per month
- Set the maximum stock required to the markup factor on that supplier multiplied by the minimum